

# Écosystèmes Agricoles Durables: « Pas Plus de Bla Bla Bla »

Transition Institute TT1.5 Forum  
31 mai, 2023



David Leishman  
Agricultural Counselor  
U.S. Embassy Paris



United States  
Department of  
Agriculture



# Écosystèmes Agricoles Durables?

DigitalAgro



АГРОСИГНАЛ



COGNITIVE  
PILOT

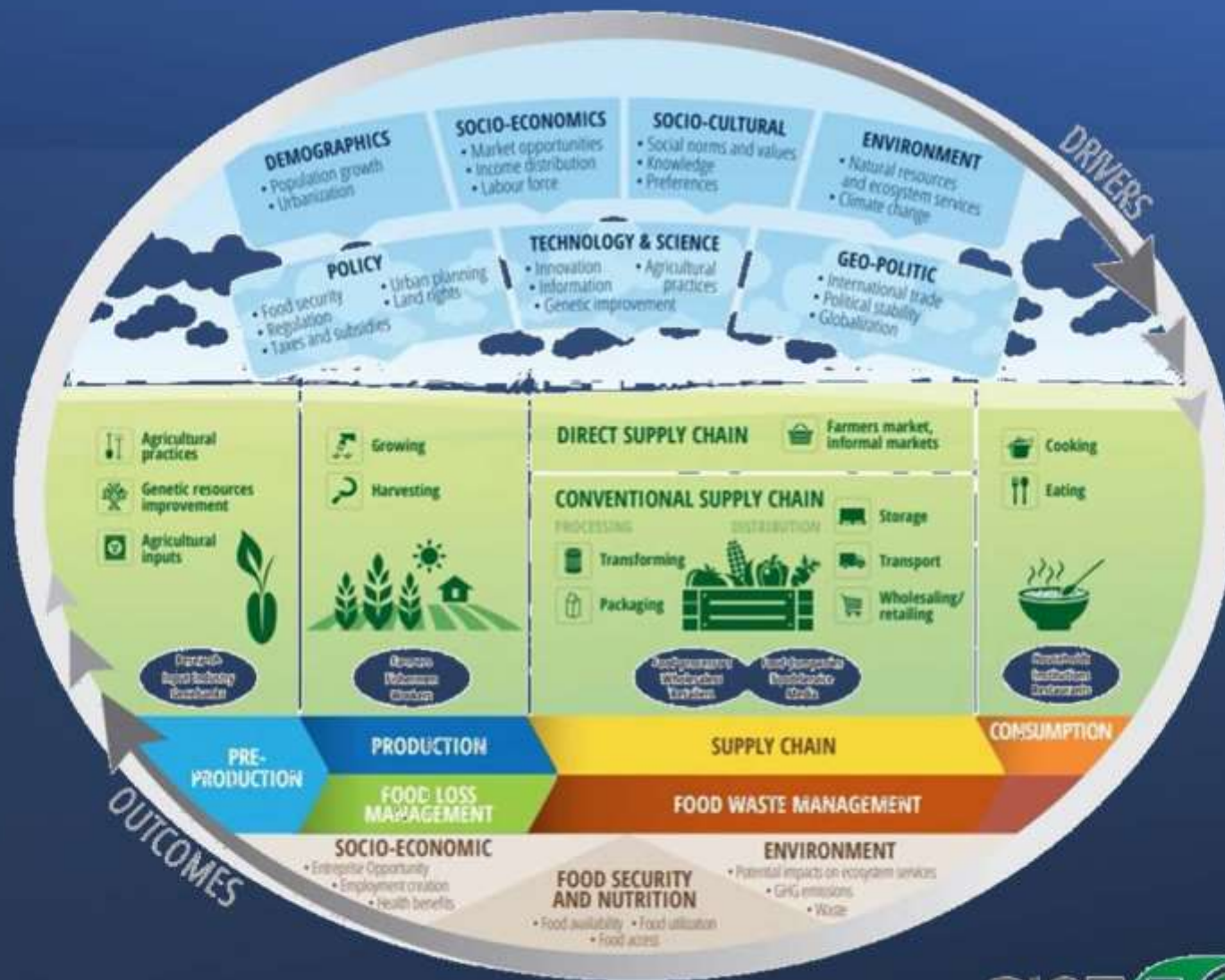




# L'enjeu du système agro-alimentaire

**Intrants**

**Terre  
Emploi  
Capitale**



**Extrants**

**Comment  
nourrir une  
population  
mondiale de  
8 milliards  
d'habitants?**

# 3 Piliers de la Durabilité

## ECONOMIQUE

Capital  
financier et  
manufacturé



## SOCIAL

Capital social  
et humain



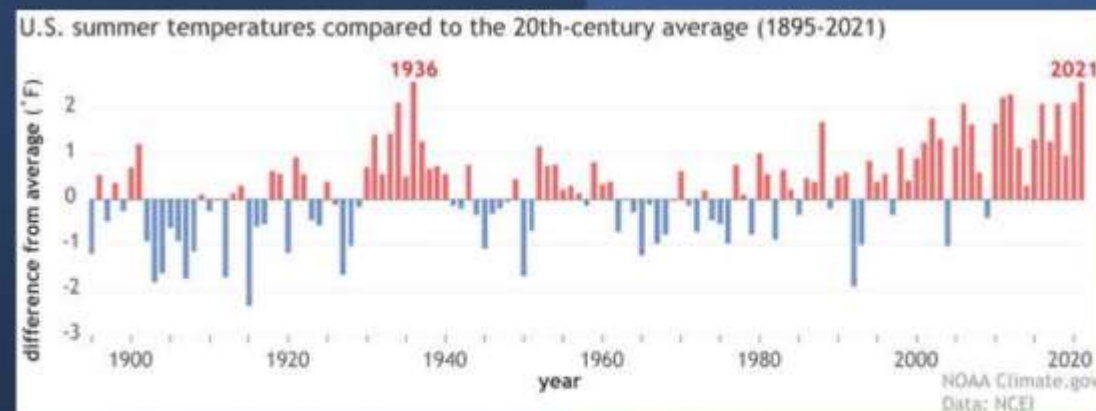
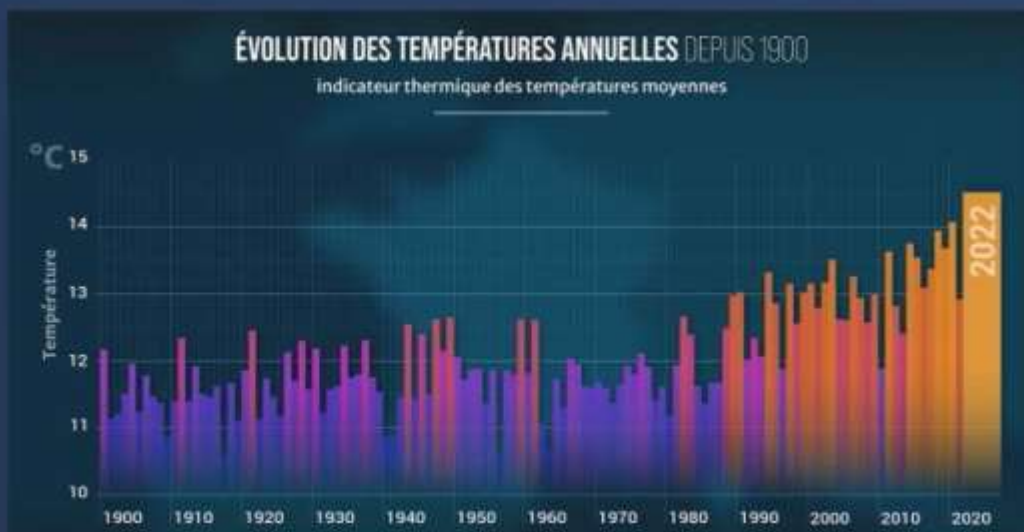
## ENVIRONNEMENT

Capital  
naturel





# La sécheresse de 2022 en France et aux États-Unis





# Les incendies de 2022 en France et aux États-Unis

**SUD OUEST**  
HORS-SÉRIE | 3,50€

Les bénéfices de ce hors-série seront reversés au profit des unités, volontaires et de la lutte contre les incendies.

Gironde, juillet 2022

## L'incendie du siècle

**Récit**  
Revivez l'événement jour par jour

**Héroïques**  
Ces pompiers qui ont affronté les flammes

**Solidarité**  
36 000 personnes évacuées : l'entraide a fonctionné

**Nature**  
21 000 hectares de forêt brûlés



**VALLEY FIRE**  
LAKE COUNTY

- 40,000 Acres Burned
- No Containment
- Mandatory Evacuations
- 4 Firefighters Hurt

KRON 4 NEWS 7:30

**MORE LOCAL NEWS** | **TOP STORIES** | LAKE COUNTY | **BREAKING NEWS: VALLEY FIRE HAS BURNED 40,000 ACRES, NO** | NORTH BAY | **SAN RAFAEL 84/56** | **SANTA ROSA 82/57**

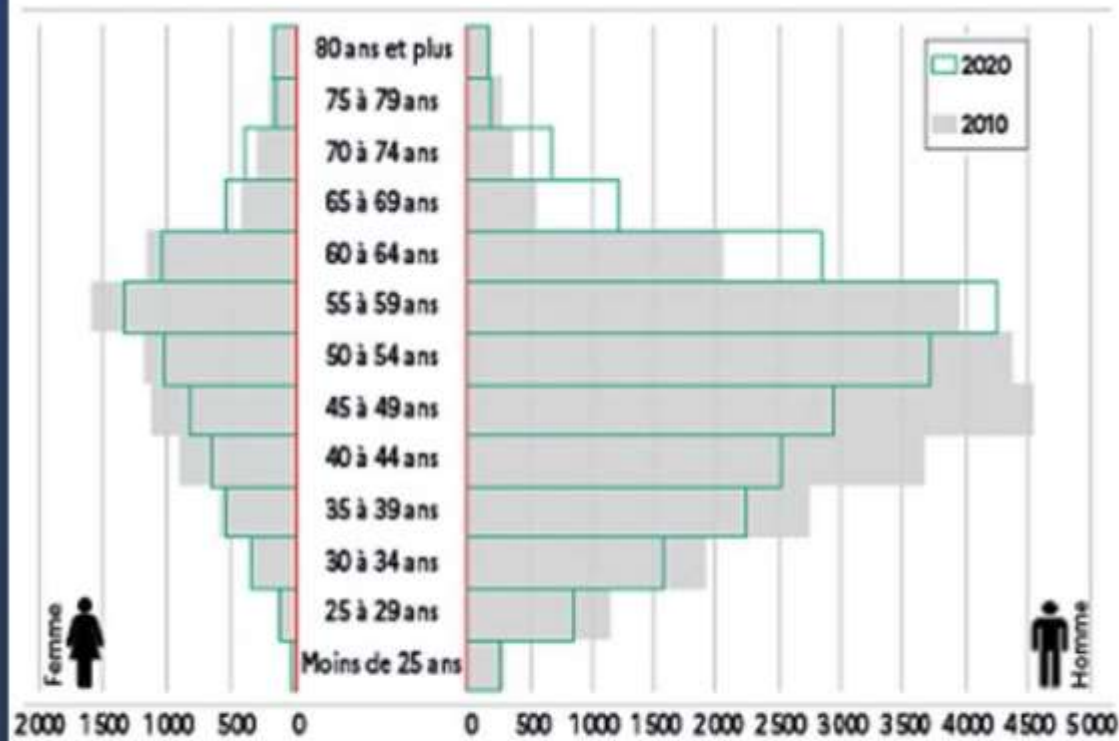




# Population agricole vieillissante et pénurie de main-d'œuvre

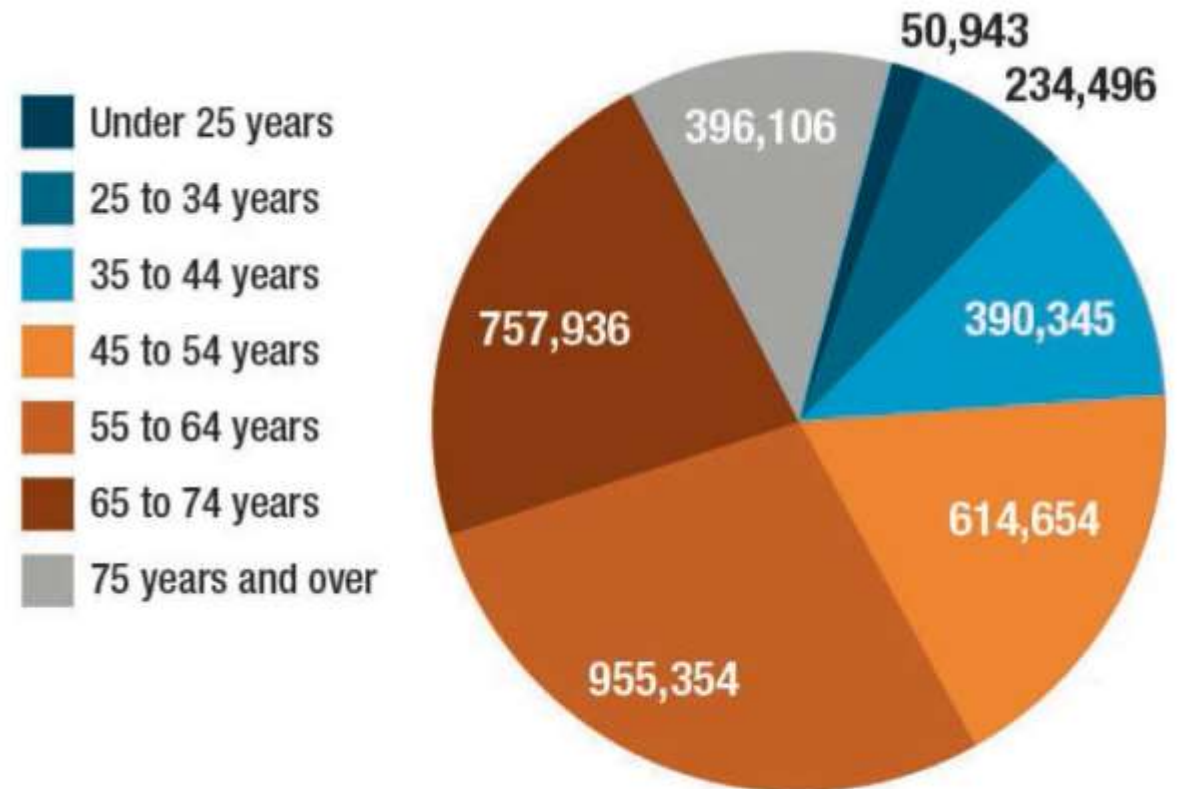
Les exploitants de la tranche d'âge 55-59 ans sont les plus nombreux

Pyramide des âges des exploitants agricoles



Champ : Chefs d'exploitations et co-exploitants  
Source : Agreste - Recensement agricole 2020

## Farmer Age, 2017





- **COP-27 196 pays 35 000 participants dont 100 Chefs d'État**
- **COP-28 Dubaï 30 novembre – 12 décembre 2023**



**« ... L'espoir n'est pas passif.**

**L'espoir n'est pas du bla bla bla bla.**

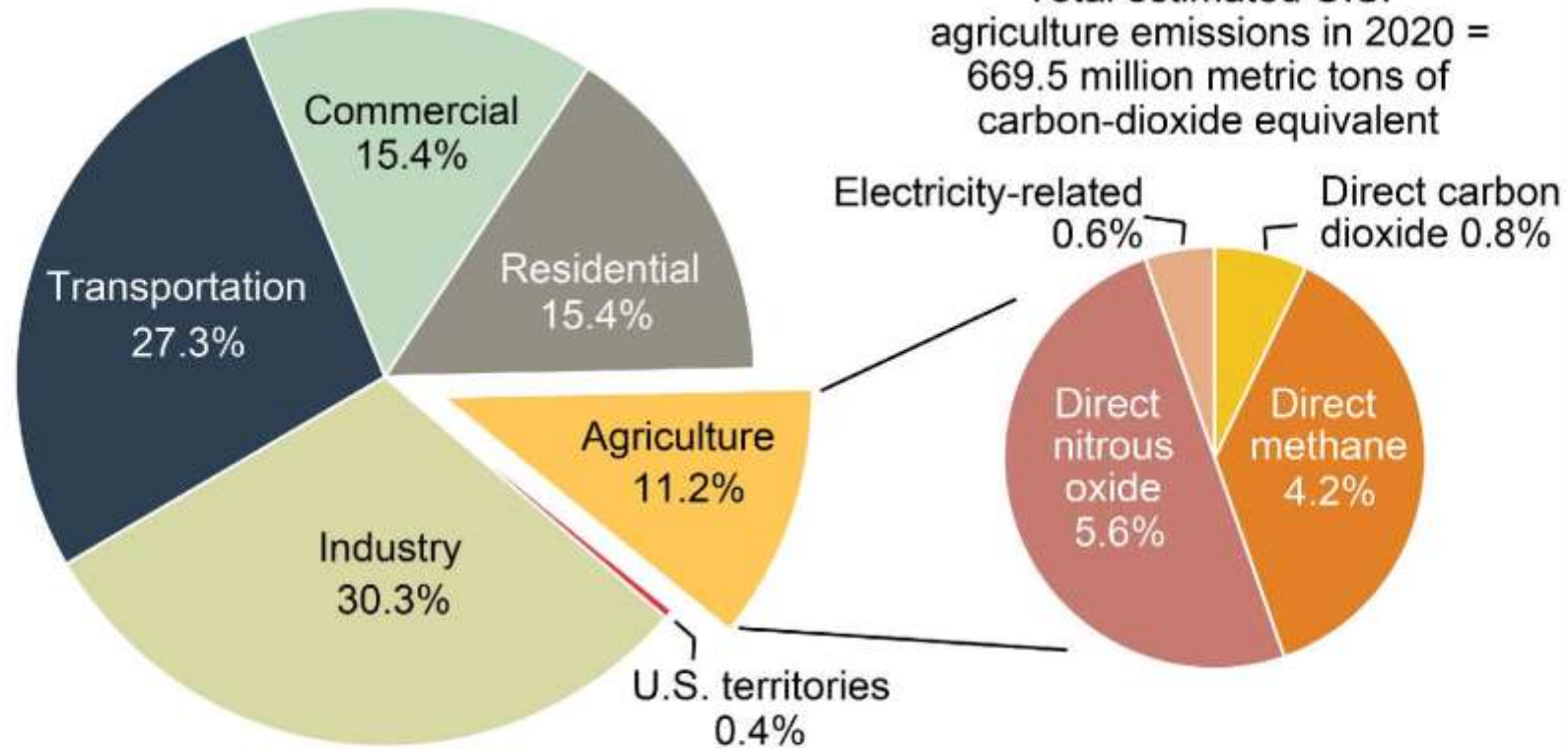
**L'espoir est de dire la vérité.**

**L'espoir passe à l'action. »**



## Estimated U.S. greenhouse gas emissions by economic sector, 2020

Total estimated U.S. emissions in 2020 =  
5,981.4 million metric tons of carbon-dioxide equivalent



Note: Carbon dioxide emissions associated with electricity consumption are allocated to each end-use sector in the left pie chart.

Source: USDA, Economic Research Service using data from U.S. Environmental Protection Agency, April 2022: *Inventory of U.S. Greenhouse Gas Emissions and Sinks: 1990–2020*, Table 2-12.

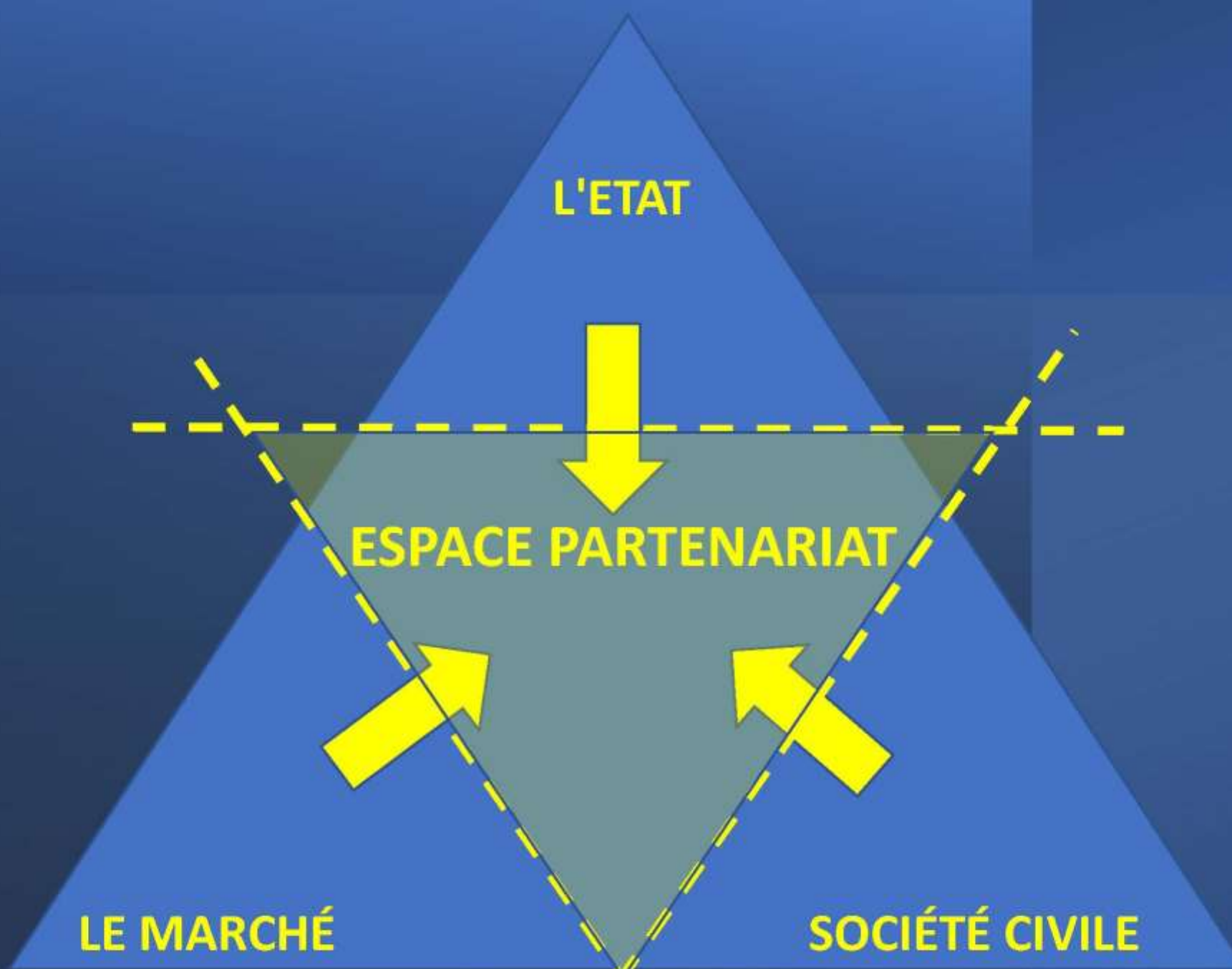




# OBJECTIFS DE DÉVELOPPEMENT DURABLE









PARTNERSHIPS FOR  
**CLIMATE-SMART**  
COMMODITIES



USDA Active Partnerships for Climate-Smart Commodities Projects  
Expanding Climate-Smart Commodity Markets

<b>53</b> States & Territories	<b>41</b> Projects	<b>53</b> Major Commodities	<b>105</b> Practices
-----------------------------------	-----------------------	--------------------------------	-------------------------

Click on a state to filter the map or use the drop-down menu. (0)



COMMODITY | PRACTICE | LEAD PARTNER |

- **\$3,1 milliards à 140 projets dans les 50 États américains pour encourager les partenariats.**
- **Plus de 100 partenaires internationaux pour encourager l'investissement et le partage de savoir-faire.**





WASHINGTON  
 Seattle  
 Olympia  
 Spokane  
 Kalispell  
 Helena  
 MONTANA  
 IDAHO  
 Boise  
 Nampa  
 OREGON  
 Salem  
 Winnemucca  
 Salt Lake City  
 NEVADA  
 Carson City  
 WYOMING  
 Rock Springs  
 Cheyenne  
 LITAH  
 St. George  
 DENVER  
 COLORADO  
 Sacramento  
 San Francisco  
 CALIFORNIA  
 Las Vegas  
 ARIZONA  
 Phoenix  
 NEW MEXICO  
 Albuquerque  
 Santa Fe  
 Los Angeles  
 San Diego  
 Tucson



CANADA

NORTH PACIFIC OCEAN

NORTH ATLANTIC OCEAN

MEXICO

Gulf of Mexico

THE BAHAMAS

CUBA

WASHINGTON D.C.

Lake Superior

Lake Michigan

Lake Huron

Lake Ontario

Lake Erie

Colorado

Utah

Arizona

New Mexico

California

Washington

Idaho

Montana

Nevada

Wyoming

Colorado

Utah

Arizona

New Mexico

California

Washington

Idaho

Montana

Nevada

Wyoming

Colorado

Utah

Arizona

New Mexico

California

Washington

Idaho

Montana

Nevada

Wyoming

Colorado

Utah

Arizona

New Mexico

California

Washington

Idaho

Montana

Nevada

Wyoming

Colorado

Utah

Arizona

New Mexico

California

Washington

Idaho

Montana

Nevada

Wyoming

Colorado

Utah

Arizona

New Mexico

California

Washington

Idaho

Montana

Nevada

Wyoming

Colorado

Utah

Arizona

New Mexico

California

Washington

Idaho

Montana

Nevada

Wyoming

Colorado

Utah

Arizona

New Mexico

California

Washington

Idaho

Montana

Nevada

Wyoming

Colorado

Utah

Arizona

New Mexico

California

Washington

Idaho

Montana

Nevada

Wyoming

Colorado

Utah

Arizona

New Mexico

California

Washington

Idaho

Montana

Nevada

Wyoming

Colorado

Utah

Arizona

New Mexico

California

Washington

Idaho

Montana

Nevada

Wyoming

Colorado

Utah

Arizona

New Mexico

California

Washington

Idaho

Montana

Nevada

Wyoming

Colorado

Utah

Arizona

New Mexico

California

Washington

Idaho

Montana

Nevada

Wyoming

Colorado

Utah

Arizona

New Mexico

California

Washington

Idaho

Montana

Nevada

Wyoming

Colorado

Utah

Arizona

New Mexico

California

Washington

Idaho

Montana

Nevada

Wyoming

Colorado

Utah

Arizona

New Mexico

California

Washington

Idaho

Montana

Nevada

Wyoming

Colorado

Utah

Arizona

New Mexico

California

Washington

Idaho

Montana

Nevada

Wyoming

Colorado

Utah

Arizona

New Mexico

California

Washington

Idaho

Montana

Nevada

Wyoming

Colorado

Utah

Arizona

New Mexico

California

Washington

Idaho









A COOPERATIVE OF FAMILY RANCHERS

# COUNTRY NATURAL BEEF











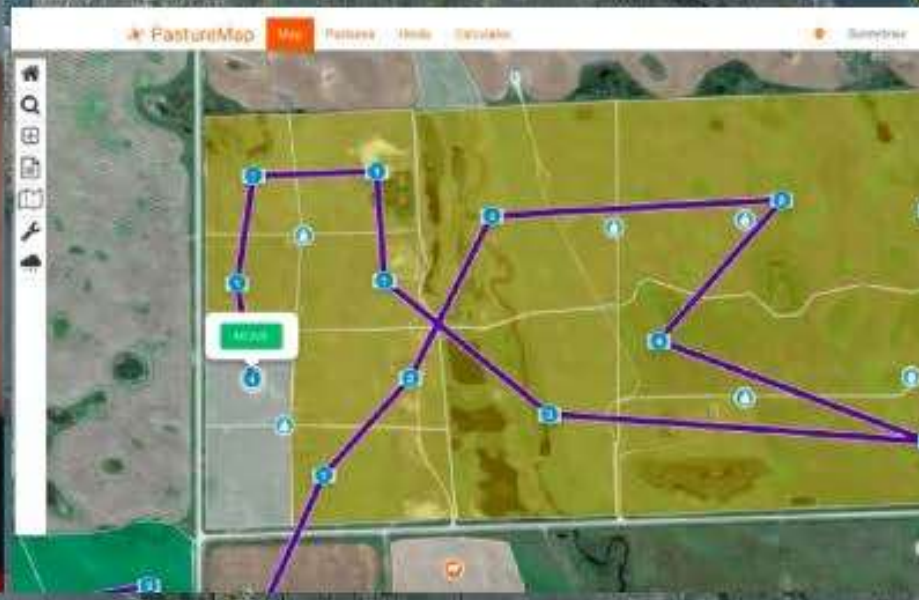
# PastureMap

, WA

Lake  
Whatcom

Deming, WA

Acme, WA







**DIANA WALL**  
 PROFESSOR AND DIRECTOR OF SCHOOL OF GLOBAL  
 ENVIRONMENTAL SUSTAINABILITY AT COLORADO STATE UNIVERSITY

"The biodiversity underground represents 40-50% of all biodiversity, and yet we have only just started to take an interest in it. We have not yet understood what benefits this gigantic reservoir offers or even how we can use it to meet some of the challenges facing us today. We haven't really established the link between what is underground and what is on the surface."



**ANNE TOMBINI**  
 FOUNDER AND DIRECTOR OF "POUR UNE  
 AGRICULTURE DU VIVANT" (PADV)

"In the first place, agroecology is not a label but a progressive approach that changes over time. This transition will take place in several avenues, including biodiversity and carbon sequestration."

EDITION 01  
**WORLD LIVING SOILS FORUM**  
 Moët Hennessy

TO PASS ON A BETTER WORLD  
 TO FUTURE GENERATIONS

June 1-2, 2022, Arles France



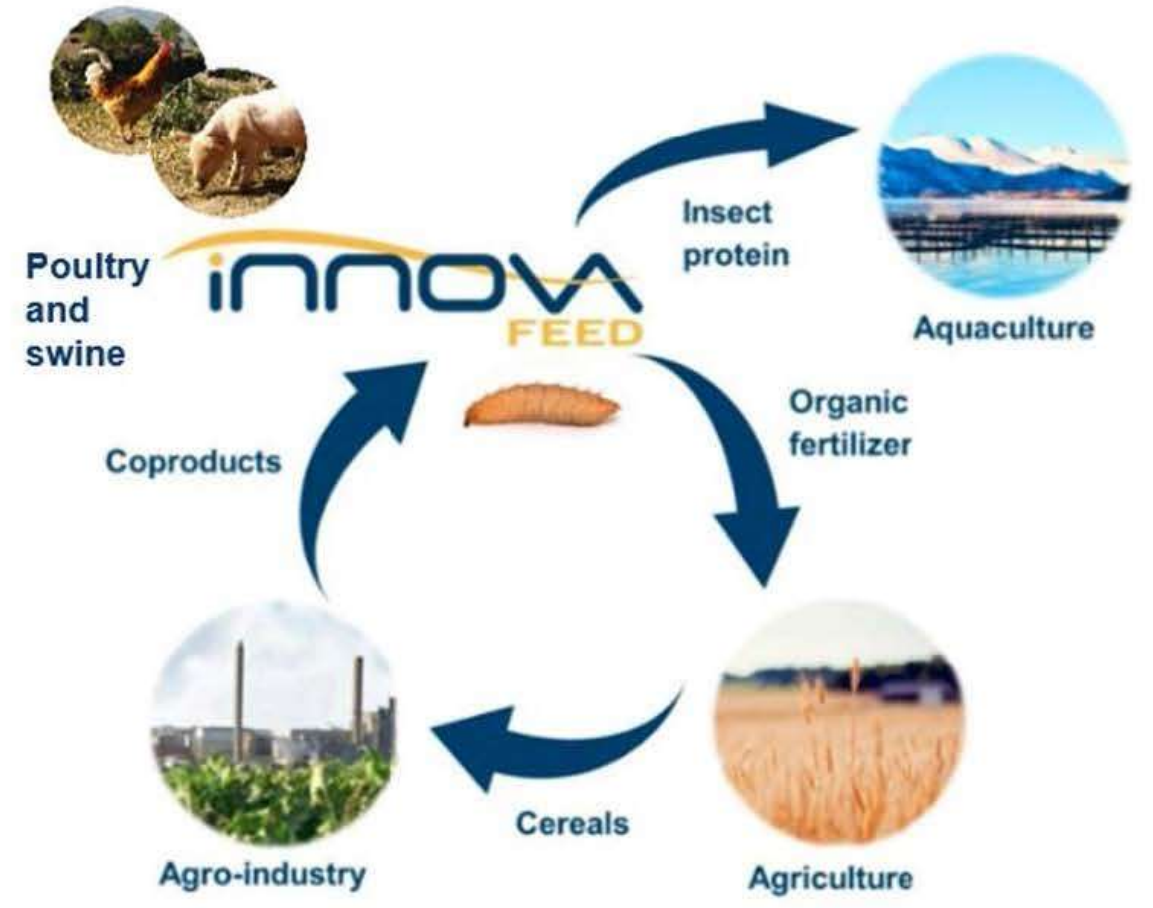




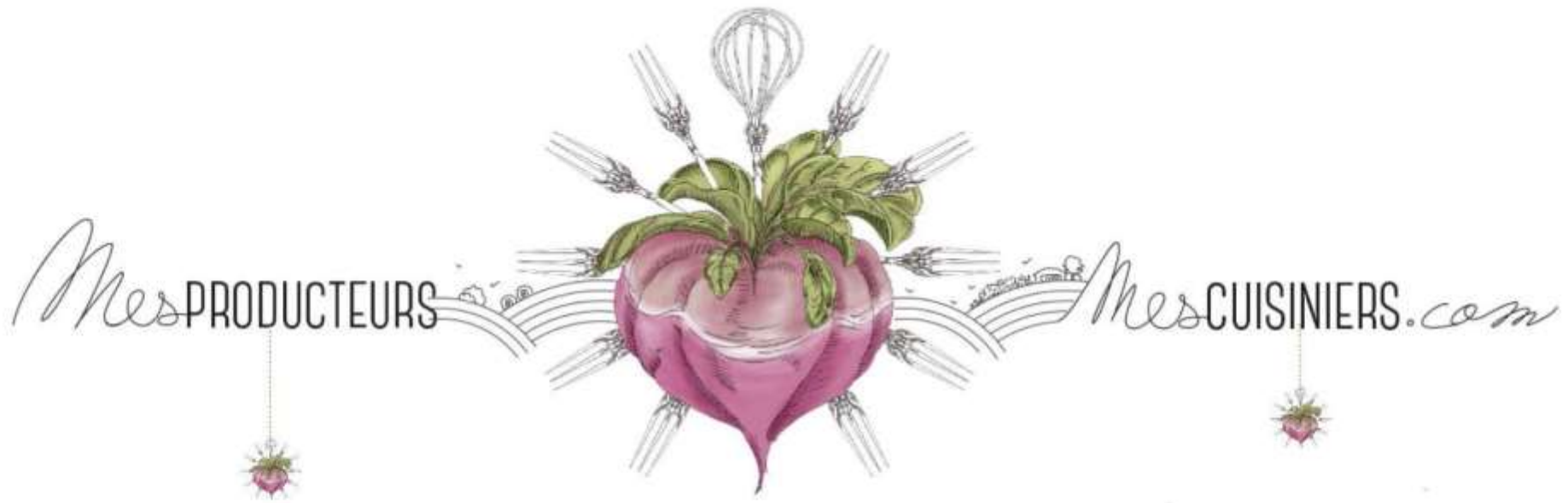
THE REGENERATIVE  
VITICULTURE FOUNDATION













PIGS only

DÉSOLÉ, LES RÈGLES VIENNENT DE CHANGER, SEULS  
LES VÉRITABLES COCHONS PEUVENT ENTRER.

